

UVee Full Body UV Therapy Systems Model: T9000

Installation Guide

Document Version: 20-005

Publication Date: 2020-10-02

The information in this document may be changed without notice and does not contain any obligations for UVee bv. This document may not be copied and/or made public through press, photocopy, microfilm nor in any digital format without previous written consent of UVee bv.

© Copyright UVee bv, Belgium 2013. All rights reserved.

Please send any feedback to UVee.

Table of Contents

1	UNPACKING.....	4
1.1	STEP 1 – OPEN THE CRATE	4
1.2	STEP 2 – REMOVE THE CARDBOARD	4
1.3	STEP 3 – UNLOAD THE PANELS	5
2	INSTALLATION.....	7
2.1	STEP 4 – INSTALL THE FLOOR.....	7
2.2	STEP 5 – INSTALL THE SIDE PANELS	9
2.3	STEP 6 – INSTALL THE ROOF	13
2.4	STEP 7 – INSTALL THE DOOR.....	16
2.5	STEP 8 – CONNECT ALL CABLES IN THE ROOF	19
2.6	STEP 9 – ATTACH THE IPAD CONTROL PANEL TO THE DOOR.....	22
2.7	STEP 10 – CONNECT THE POWER CABLE AND TURN THE DEVICE ON.....	23
2.8	STEP 11 – TEST THE DEVICE.....	23
2.9	STEP 12 – INSTALL THE ROOF LID	24
2.10	STEP 13 – COMPLETE THE INSTALLATION	26
3	TESTING	27
3.1	POWERING ON THE DEVICE	27
3.2	VERIFY THE CONNECTION BETWEEN DEVICE AND CONTROL PANEL	27
3.3	VERIFY THE DEVICE’S OPERATION.....	27

1 Unpacking

Unpacking the device from the disposable cardboard shipping crate.

1.1 Step 1 – Open the Crate

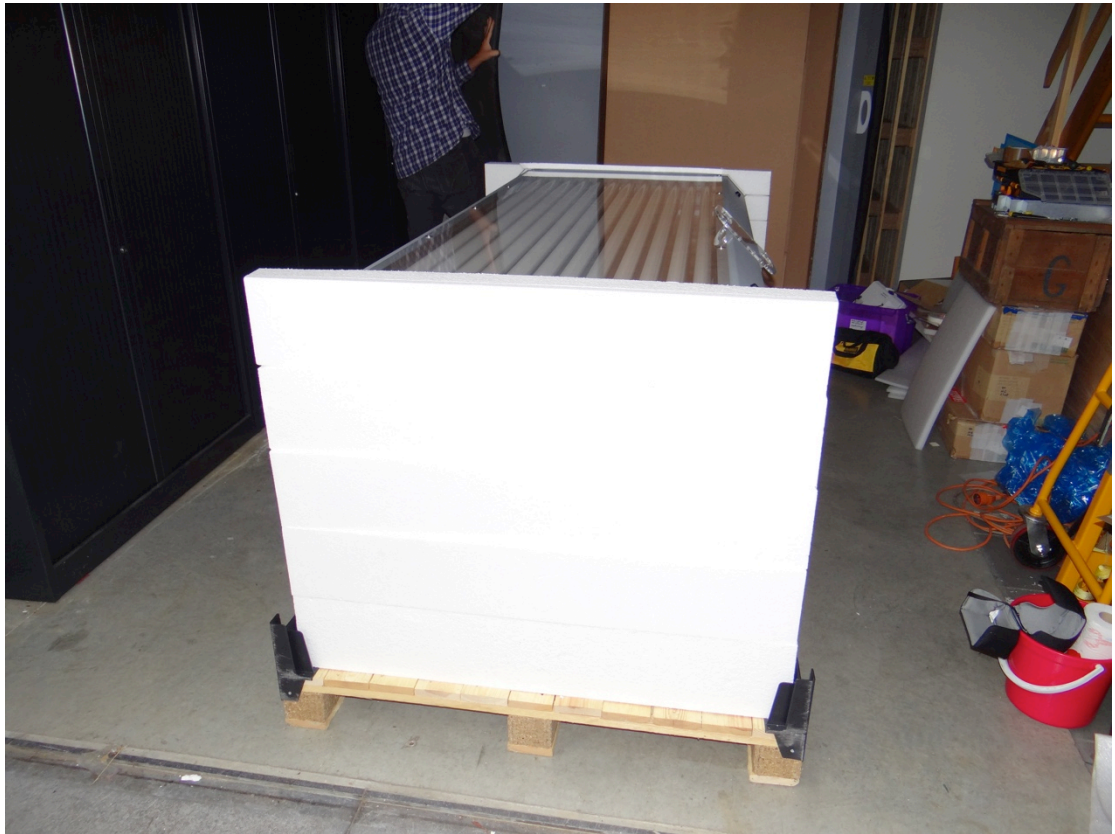
- Remove the lid from the shipping crate
- Remove the vertical handle bars from the shipping crate
- Remove any other loose parts which you may find in the shipping crate

1.2 Step 2 – Remove the Cardboard

- Unlock the black plastic fasteners at each of the four corners of the cardboard by pushing them in.



- Carefully lift the cardboard upwards, taking care to equally pull it up on every side (this works best if you have 2 people doing this, one on either end of the crate)
- You should end up with the crate looking like this:



1.3 Step 3 – Unload the Panels

The next steps require two people.

- The top panel is the door panel (recognizable by the transparent door handle)
- **CAUTION: Do NOT lift the door using the door handle!**
- Lift the door panel up and carefully stock it in a safe place
- The second panel is the left side panel
- Lift the panel up and again carefully put it aside
- The third panel is the right side panel (recognizable by the yellow warning labels)
- Lift the panel up and put it carefully aside
- The last panel is the rear panel (recognizable by sensor board behind the lamps and the extra gray or blue flat cable coming out of the top)

- Lift the panel up and put it carefully aside



- When the four panels are carefully stored aside, lift the Roof from the crate and store that aside as well
- Underneath the Roof is the Floor Panel. Carefully remove it from the crate.
- Lastly, you'll find some boxes in the Styrofoam cushion on the bottom containing addition materials. Remove both boxes carefully.
- You can now dispose of the leftovers of the shipping crate and start installing the device.

2 Installation

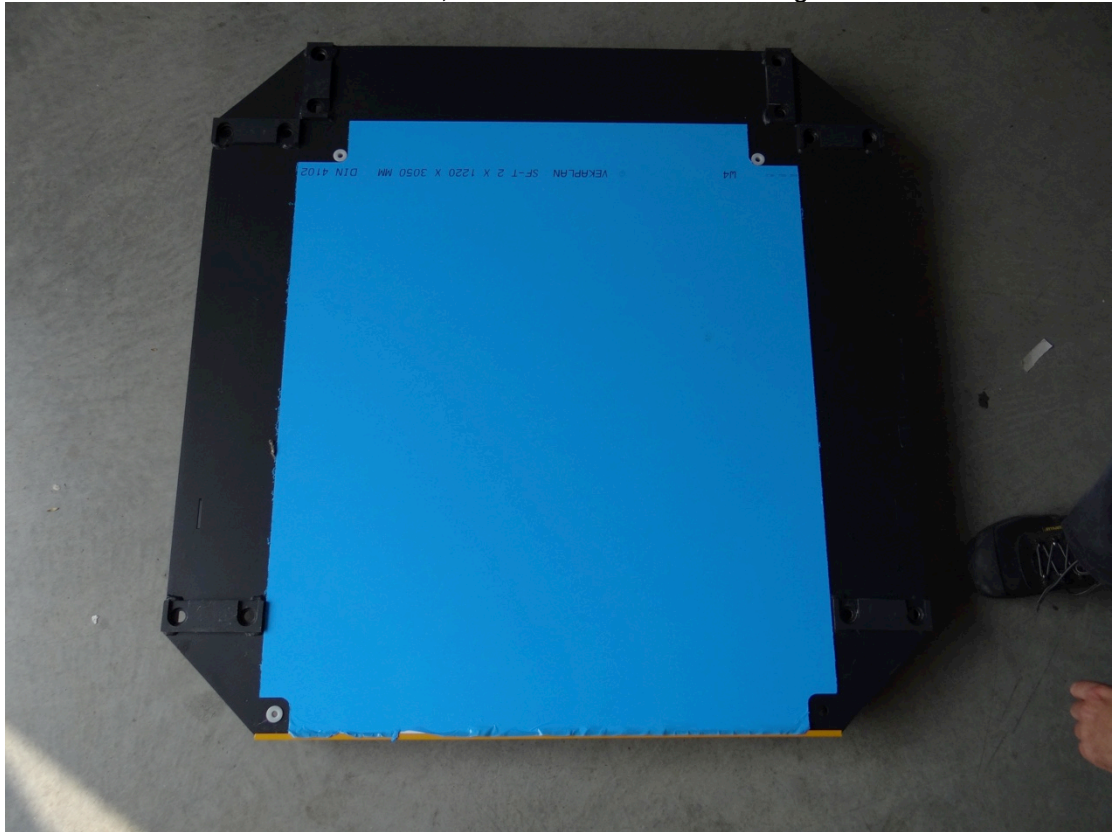
2.1 Step 4 – Install the Floor

Note that the yellow border needs to be at the front of the cabin.

- Install the floor on an even surface
- Use a bubble level to make sure that the floor is horizontal
- You can adjust the floor with the extendable feet at the bottom

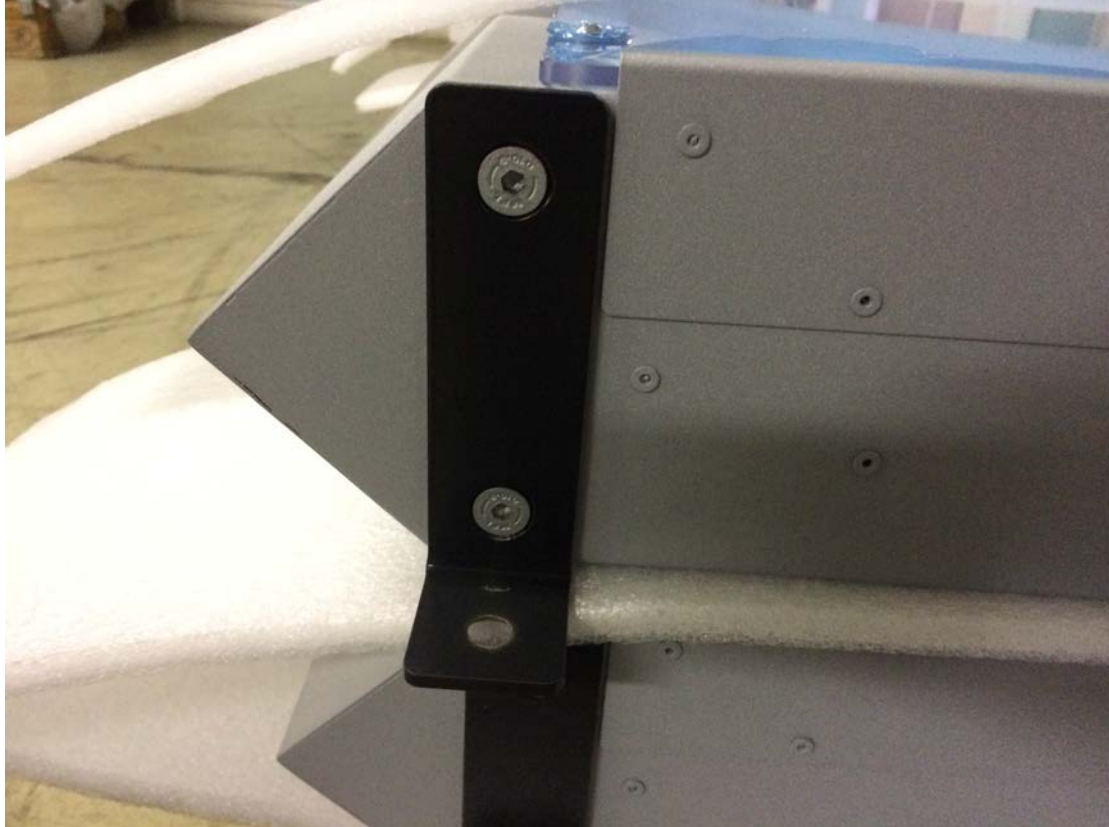


- In case there is a blue foil on the mat, remove that before continuing the installation

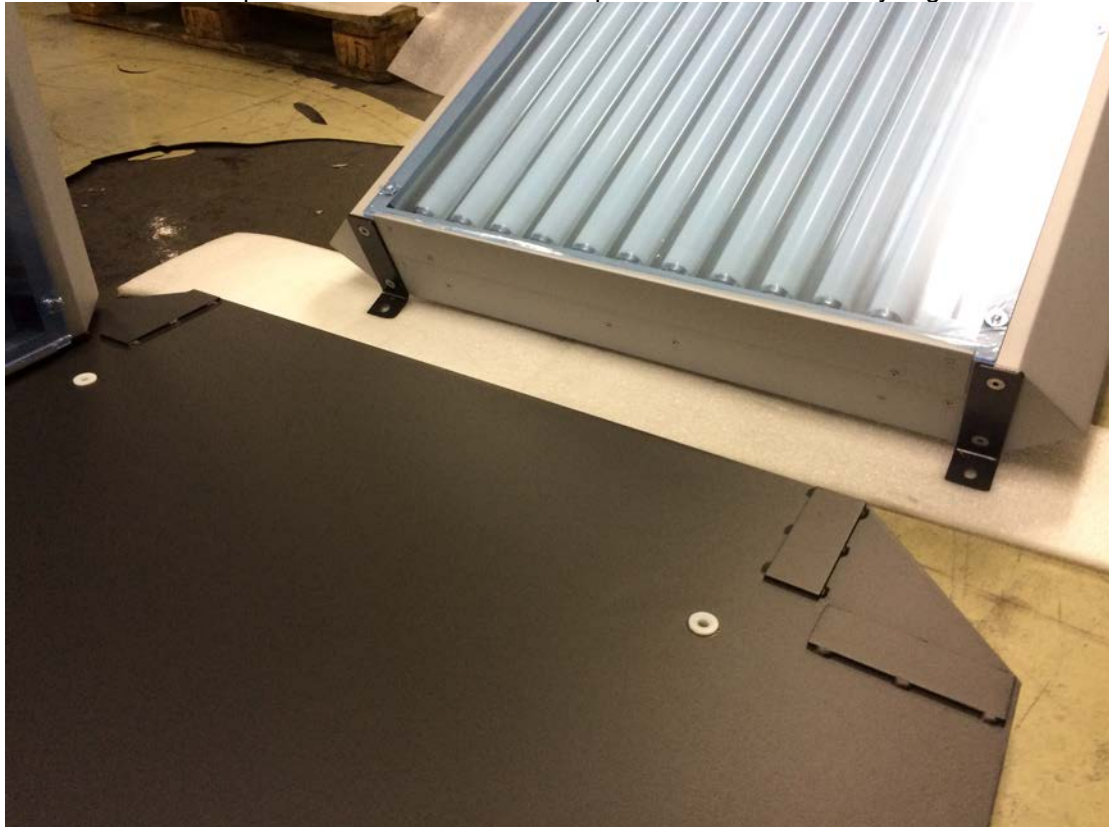


2.2 Step 5 – Install the Side Panels

- a) Start with the rear panel. It can be recognized because it has a grey or blue flat cable coming out of the top.
 - Screw the metal L-brackets to the bottom of the panel using the countersunk bolts, as shown in the picture below. (The short side of the L-bracket should be pointing towards the outside of the panel).



- Lift the rear panel on the back of the floor panel. It should be neatly aligned.



- Fasten both L-Brackets into the floor panel using the countersunk bolts.



- b) Next do the same for the left- and right-side panel.
Note: the right-side panel can be recognized by the yellow warning labels. The left side panel does not have warning labels. (Sometimes the warning labels are glued on the door. In that case, the left and right side panels are interchangeable.)



2.3 Step 6 – Install the Roof

- Remove the roof cover from the roof



- Lift the roof up on top of the cabin, with the on/off switch towards the rear of the cabin.



- Use 4x M8 bolts to fasten the roof to each of the 3 panels.



2.4 Step 7 – Install the Door

- Remove the two nuts and the metal bus at the front left of the roof. (The metal bus can also be packed together with the other mounting materials.)
- Lift the door carefully and slide the pin at the bottom into the Teflon bus at the front left of the floor panel.
- Push the green plug and cable through the round opening in the roof.



- Slide the cable through the round bus.
- Push the bus all the way through the hole in the roof (from above) and into the hole at the top of the door until the door is fixated. Make sure that the bus is pushed as deep as it can go.

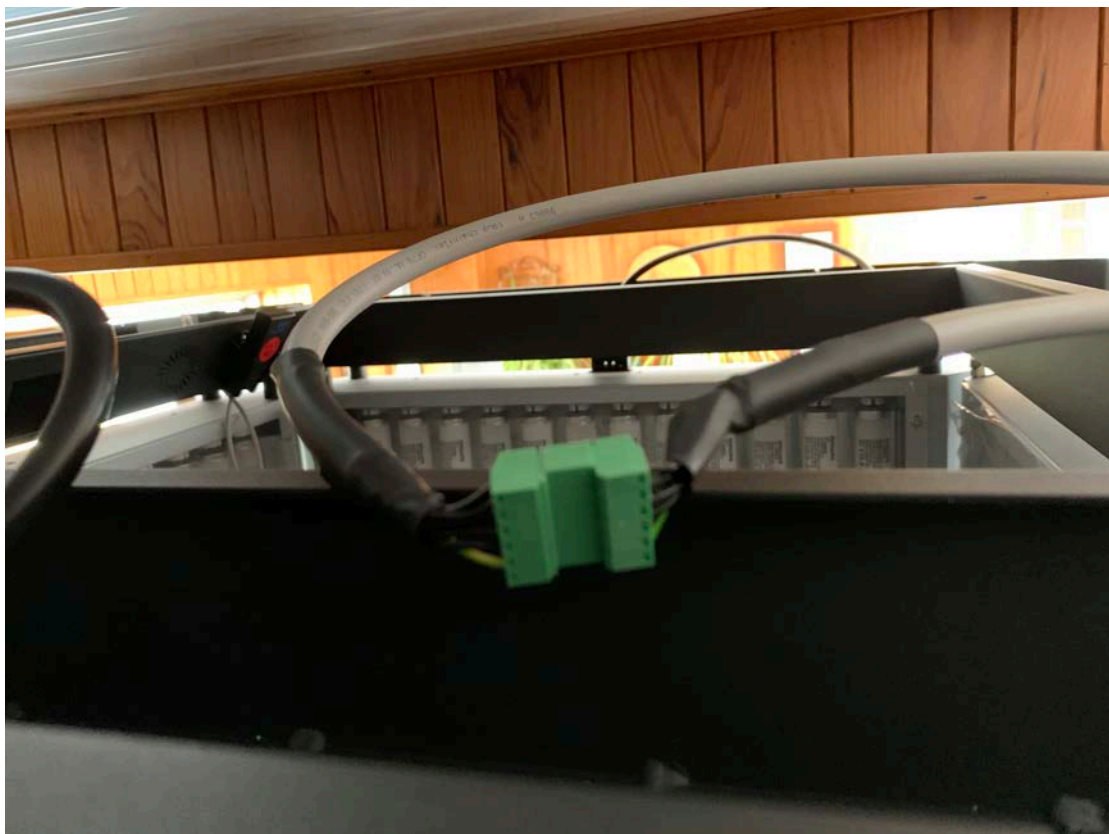
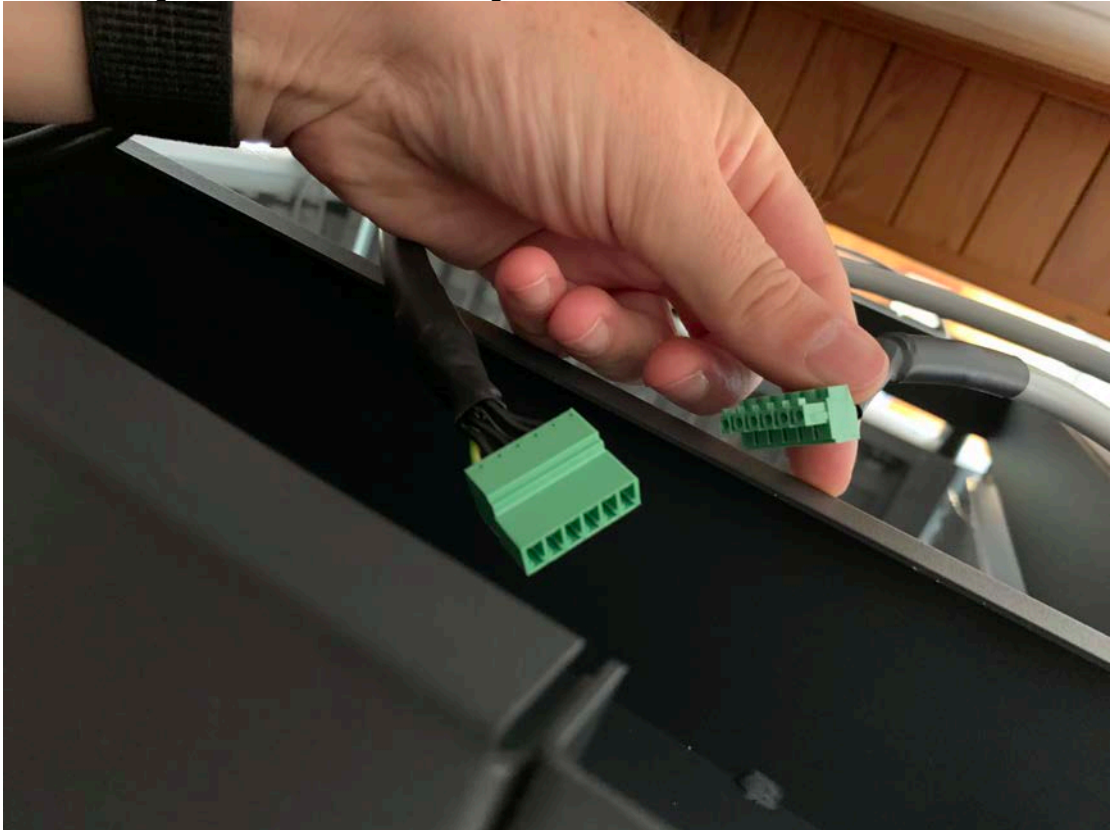


- Fix the bus with the two nuts that were preinstalled in the roof.



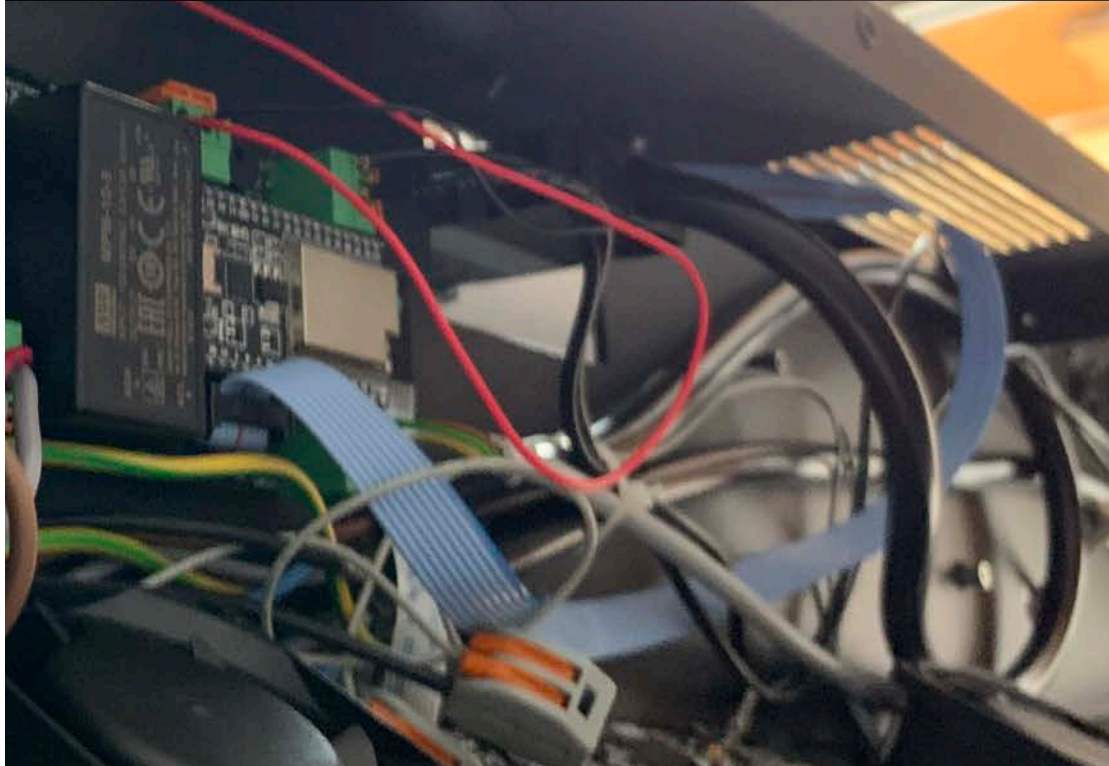
2.5 Step 8 – Connect all Cables in the Roof

- Connect the green door connector to the green connector in the roof.





- Connect the grey or blue sensor board flat cable from the rear panel to the main cpu board in the roof. The sensor cable should be guided through the hole in the roof above the rear panel.



- Click the female Wieland connectors from the roof into each one of the panel's male Wieland connector. The connectors should click into the locking mechanism.



2.6 Step 9 – Attach the iPad Control Panel to the Door

- Plug in the USB power cable in the USB port

- Install the iPad with the power plug to the left into the iPad holder
- Connect the other side of the power cable to the iPad

2.7 Step 10 – Connect the Power Cable and Turn the Device On

- Make sure that the main power switch at the back of the device is set to the OFF position
- Plug in the power cable into the back of the device first
- Only then, plug the power cable into a wall socket
- Move the power switch into the ON position
- The device should emit 3 beeps and the UVee logo should be visible on the screen when the door is opened

2.8 Step 11 – Test the Device

To test the device, follow the instructions in Chapter 3.

2.9 Step 12 – Install the Roof Lid

- Turn the Power Switch OFF
- Unplug the power cable

- Screw the Lid on top of the roof (the main fuse should always be accessible)



2.10 Step 13 – Complete the Installation

- Make sure that the device is in the final position. There must be at least 50 cm of free space around the device to allow for sufficient ventilation.
- Plug in the power cable
- Turn on the Power Switch ON
- Wait about one minute after turning the device on, for the iPad Control Panel to connect (the indicator light on the iPad Control Panel should turn green and the device should be listed on screen with the word READY next to it)

3 Testing

3.1 Powering on the Device

1. Plug in the power cable
2. Turn the power switch ON
3. Turn on the iPad Control Panel
4. When the iPad has booted, unlock it (slide your finger from left to right on the screen)
5. Start the UVee Control app (at the bottom of the screen)

3.2 Verify the Connection between device and Control Panel

At the bottom of the UVee Control app a GREEN square indicates successful connection between the iPad Control Panel and the device.

If the square is Black or Red, there is no connection or the connection has dropped.

You can try to troubleshoot this with these steps:

1. Verify if the iPad is connected to the UVee Wi-Fi network
 - a. Press the Home button on the iPad to go to the main screen
 - b. Open the Settings app
 - c. Check if it says "UVee" near Wi-Fi in the left bar
2. If it does NOT say UVee, click on Wi-Fi and see if the UVee network is listed among the available Wi-Fi networks.
3. If it does say UVee, try to kill the UVee Control app and restart it:
 - a. Double click the iPad Home button
 - b. Slide the UVee Control upwards off the screen with your finger
 - c. Press the iPad Home button again to go back to the main screen
 - d. Start the UVee Control app again
4. If UVee is not listed:
 - a. Turn OFF the device, wait a few seconds, and turn it back ON
 - b. Check if the Apple Airport Express in the roof is powered on (orange light). If not, check if the white power cable is connected properly.

3.3 Verify the Device's Operation

1. When powered on, the UVee logo is visible on the internal screen of device, when the door is opened.
2. When the door is closed, the logo should disappear.
If NOT, check the magnetic door contact at the top right above the door.
3. On the UVee Control app, push the A or B to toggle between UVA and UVB.
4. On the UVee Control app, push the Joule value to enter a new dose.
5. Once a value has been entered, you can press the SET button to transmit the selected dose to the device.
6. On the internal screen, the dose should now be visible as well as the selected UV-Type (uvA or uvB), when the door is closed.
7. If the door is open, the internal screen will show that the door needs to be closed.
8. Once the door is closed, you can START the session by pressing START on the iPad Control Panel or by using the START/STOP button inside of the device.
WARNING: Always wear UV-protection goggles when operating the device. When doing tests inside the device, make sure that your skin is covered and that you only spend a minimal amount of time inside the device.
9. When these tests are done, the device is fully operational.

